



Nambour Orchid News.

November 2020

Judges Choice October - Odontonia Papageno 'Lavender Lady'



This is the first flowering of this plant and it has two inflorescences, one with five flowers and the other with three flowers. It was purchased as a seedling 18 months ago and has taken well to repotting in a mix of coconut chip, charcoal, small kiwi bark and perlite. It has also had slow release fertiliser and is kept moist but well drained in a section of our Shadehouse with a number of other oncidium alliances. This plant along with all our orchids receives a half solution of liquid fertiliser weekly. **George**

Steve receiving his STOCQ awards for
Fredclarkera After Dark 'Bakers Black Hole'
Fredclarkera After Dark 'Van Brooklyn'





Secretary news November

Plant market at the meeting. At the November meeting we will be holding a member's plant market. This is to help members who have withdrawal symptoms, due to the lack of 2020 shows, to purchase some new plants to add to their collections. There is space for more sellers so if you have some plants to sell please let me know so I can allocate a table. Instructions were sent out earlier in the month as to what the requirements will be.

Popular vote is back for the November meeting. Rules are the same as before, and the vote will be completed in the same way the only difference being members must bring their own pen, and the hanging of the numbers on your plants will be done by a volunteer and collected at the end of the meeting by the same volunteer. This is to minimise touching of the numbers to comply with Covid rules.

Format for the meeting will be: Arrive no earlier than 12.45pm.

Plant sellers will hand in their plant list to David and be allocated a sales space. Sales will be from 1.30pm – 2.30pm no cultural corner for this meeting. 10% commission payable to the club.

The popular vote plant slip will be attached to the newsletter so each member can print and fill out before coming to the meeting. When the numbers are hung on the pot you will need to fill out the number on the slip. This slip is also printable from our website under the tab links/forms.

Judging will be from 1.30pm – 2pm and we ask that unless you are part of the panel for the day to please give the judges the space that they need to complete their task by staying away from the display plant area.

Popular voting will be from 2-2.30pm at which time the meeting will start.

We will have a break as normal shortly after. Members are able to bring their own afternoon tea if they wish and mingle keeping a safe Covid distance. Just a reminder to use the same chair for the duration of the meeting so we don't have to sanitise again. We are hopeful that the current rules will change for the better before we return in January.

Christmas Party: Tuesday 8th December. Waterfront Hotel David Low Way Bli Bli

Cost \$25 per person. Alternate drop menu. Bookings and payment due by the November meeting. Payment can be done online, bank details in the newsletter.

Please do not come to the meeting before 12.45pm .

This is to allow the committee and helpers time to set up the requirements for a Covid safe meeting before members start to arrive. Plants must be tabled by 1.30pm for Judging. As we are currently doing a 1st, 2nd, 3rd Judges choice it takes a bit longer.

Remember to notify me if you are coming to the meeting to enable the sign on sheet with required information to be prepared.

Please do not come to the meeting if you have any cold or flu symptoms

Stay safe everyone and we hope to see you at the meeting. **Alison**

President's Report

Well, here we are, almost at the end of 2020 and I hope the months of summer are not too extreme with refreshing winds blowing kindly and rain falling gently, only at night. Okay, I know you are all saying ... as if but it would be good! As we are reminded constantly to have a safe plan in case of fires or floods, orchid growers should apply a plan to be vigilant for appearance of pests and other nasties during the hot weather. Your care and attention to your plants will result in healthy orchids and hopefully, lots of flowers for next year when we will get back to shows. (Fingers crossed). Congratulations to all who have received awards this year and thanks to Charlie and the judges when we were able to convene panels as restrictions eased. It has been difficult for the students undertaking the judging course with Charlie and associate judges also, to expand their practice at judging, due to the cancellation of shows this year. Hopefully, next year will see the Orchid Societies in our region, able to recommence staging shows.

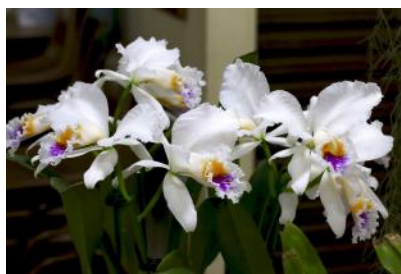
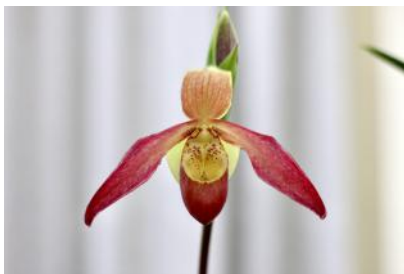
I hope you enjoy the festive season, stay well and have a Happy New Year. **Gina**

From "Orchid Wise" by Roger Rankin - 'Orchid growing is the toy department of life'



Section of benched plants at October meeting

A selection of plants on display at the October meeting



Rejuvenating Orchids

by Alan Hope

Orchid growers often need to attend to an orchid that is old, pot-bound or shows signs of decline. Previous re-potting may have been neglected or the plant, having been recently acquired at an orchid auction, nursery or as a gift, is in poor condition.

Damage to the plant by frost, sunburn, insect bites or various rots and fungal attacks may also require remedial action. Signs that an orchid requires attention include weak and straggly growth, moss on the surface of the mix, dieback, rot and poor flowering.

Plants that have overgrown their pots may also need attention. However, first assess whether you wish to keep the plant, as space and resources are scarce and your effort may be better spent on other plants.

Typically, friends and relatives may have unknowingly donated diseased plants, more often than not cymbidiums that have belonged to the family for some time. It is probably in the best interests of your collection to discard such family heirlooms.

Re-potting requires the complete removal of the old orchid mix and replacement with new mix in a new or sterilized pot of an appropriate size. Any dead portions of plant should be removed with sterilized secateurs and the plant sprayed for pests such as scale. The re-potted plant should also have some long-life fertilizer scratched in around the edge of the pot, and then watered well and placed in a protected area off the ground to re-establish.

Highly valued plants that would be difficult and/or costly to replace present a greater challenge. In many cases only a small part of the plant may survive, perhaps a single pseudobulb, cane or growth. For cymbidiums and other orchids with bulbs, cleaning up the back-bulb and placing it with fresh sphagnum moss in an inflated plastic bag, offers a good chance of new growth being generated. Some genera, such as lycastes, will often produce a new growth only if two or more joined pseudobulbs are used.

Orchids with bare canes (e.g. dendrobiums), a creeping growth habit (e.g. Bulbophyllum) or ones with no roots (all genera) are best tackled during the growing season (spring-summer-early autumn). The best option is to find a piece of the plant with a leading growth, as this is the most vigorous. However leafless canes, as is the case with many dendrobiums, may be all that is left to work with. If so, the canes can be cleaned and cut into sections containing two or three nodes. Each section should then be placed horizontally on a bed of live sphagnum moss and pinned down with small pieces of bent wire. It may take some time for the nodes to produce new growths.

Orchids with a creeping growth habit, such as Bulbophyllum and epidendrums, should be re-started by attachment to a mount. Placing fresh sphagnum moss around (but not under) the growth helps to retain moisture and allows the emerging roots to attach themselves to the mount.

Both the growth and surrounding moss should be fastened firmly to the mount with twisty-tie, and the plant then regular misted, especially during hot, dry weather. Root loss is a serious problem and paphiopedilums are among those orchids that can lose all their roots. I have had best results re-planting these plants in fresh sphagnum moss in a small pot.

Secure the plant with a small wooden skewer to avoid movement and place it in a sheltered, shady position to recover. Once again patience is required as it can take many months for some paphiopedilum plants to re-grow roots, if ever!

Finally, how do you rejuvenate plants devastated by rot or fungal attack? The rot may move so quickly that the whole plant is at risk and remedial action is required without delay. The affected section of plant should be removed with a sterilized knife, razor blade or scissors and appropriate fungicidal sprays or sealants then applied to minimize further outbreak.

With thanks from Orchid Societies Council of Victoria.

Species Meeting David & Lorraine's - 8th November 2020

Benched Plants:

Arundina graminifolia, *Brassavola perrinii* x2, *Bulbophyllum basisetum*, *Bulbophyllum corolliferum*, *Bulbophyllum cheiri* subsp. *cheiri**, *Bulbophyllum falcatum*, *Bulbophyllum graveolens*, *Bulbophyllum makoyanum*, *Bulbophyllum nymphopolitanum*, *Bulbophyllum sinapis**, *Bulbophyllum wendlandianum*, *Capanemia superflua*, *Cattleya aclandiae*, *Cattleya briegeri*, *Cattleya maxima*, *Cattleya granulosa*, *Cattleya mossiae*, *Cattleya pumila*, *Cattleya purpurata*, *Cattleya schilleriana*, *Coelogyne pandurata*, *Dendrobium atrovioleaceum*, *Dendrobium chrysotoxum*, *Dendrobium helix*, *Dendrobium pacificum*, *Dendrobium parishii**, *Dendrobium smilliae*, *Dendrobium thysiflorum*, *Dendrobium unicum*, *Eulophia andamanensis*, *Gongora aromatica*, *Gongora scaphephorus*, *Ionopsis utricularioides*, *Lycaste aromatica*, *Maxillaria ferdinandiana*, *Miltonia spectabilis*, *Myrmecophila tibicinis*, *Paphiopedilum appletonianum*, *Paphiopedilum callosum*, *Paphiopedilum callosum* var. *subleave*, *Paphiopedilum rothschildianum*, *Phalaenopsis amabilis*, *Phalaenopsis stuartiana* x3, *Phalaenopsis tetraspis*, *Phragmipedium pearcei*, *Renanthera citrina*, *Schoenorchis scolopendria*, *Seidenfadenia mitrata*, *Smitinandia micrantha*, *Trichoglottis loheriana**, *Vanda miniata*

Plant names are checked on the WCSP list of species plants. If your name given on the day differs from that on Kew it is identified on this list with an *

**Bulbophyllum sinapis*; *Bulbophyllum sinapis*

**Bulbophyllum cheiri*; *Bulbophyllum cheiri* subsp. *cheiri*

**Dendrobium rhodopterygium*; *Dendrobium parishii*

**Trichoglottis loheriana*; *Staurochilus loheriana*

Cultural Plant of the day: *Dendrobium thysiflorum*

This orchid is native to Myanmar, Thailand, Laos, Vietnam, and parts of China and India. Found at elevations of 1200-2000 m in humid mossy forests as an epiphytic, lithophytic or terrestrial species.

We grow it under 50% shade cloth and hanging so it gets good light and air circulation.

It is well watered from October till April, then less as it gets cooler. Potting is normally done as soon as flowering is finished. The mix is perlite, charcoal and medium bark. Make sure the mix is moist before potting. Don't over pot. Make sure the orchid is firm and well staked.

Fertilise weekly September - May .
Every 2 weeks June - August with Peters Cal Mag Finisher -1gm / ltr
It builds into a very rewarding specimen and is relatively easy to grow and always makes a statement when well flowered. **David**



Species



Arundina graminifolia



Bulbophyllum basisetum



Campanemia superflua



Bulbophyllum nymphopolitanum



Paphiopedilum rothschildianum



Cattleya mossiae var. coerulea



Cattleya pumila



Dendrobium parishii



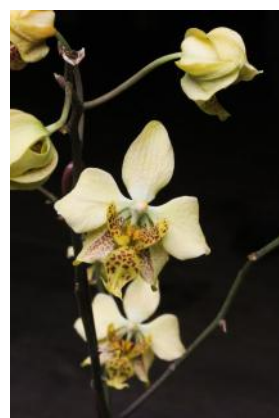
Dendrobium smillieae



Dendrobium unicum



Gongora pleiochroma



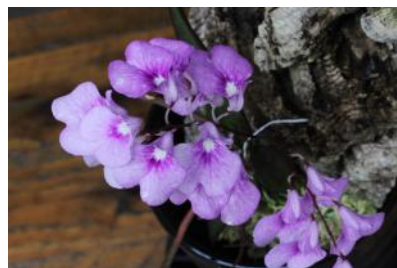
Phalaenopsis stuartiana



Dendrobium atroviolaceum



Dendrobium pacificum



Ionopsis utricularioides

The little Black Ant, Scale insects, Mealy Bugs, Aphid Alliance

by **Ben Wallace**

A contribution to the Australian Orchid Foundation Awareness Campaign.

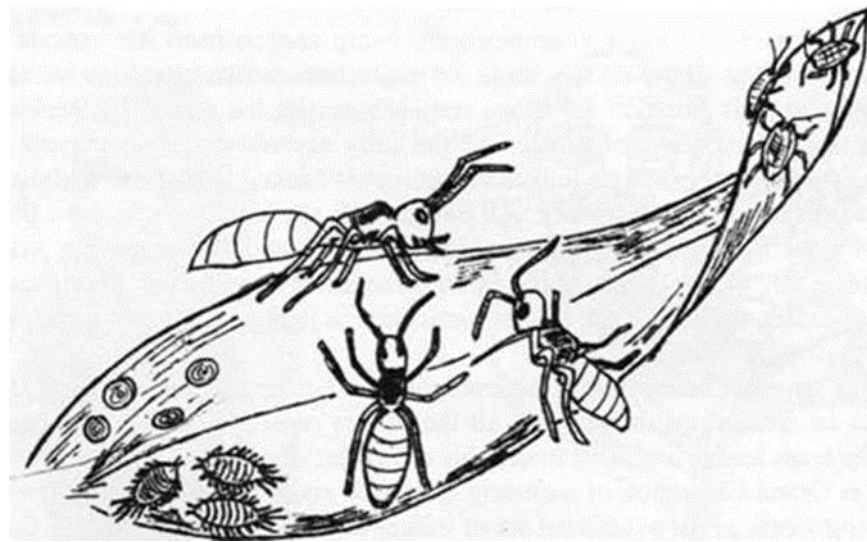
These four groups of insects can work hand-in-glove to make a living at the expense of your orchids. The last three literally suck sap from your plants for their own needs, and produce sugary exudates that ants then feed on. In turn the ants carry the sapsuckers to the choicest localities, such as young emerging leaves, expanding buds or active root tips, where the orchid's nutrient content is at its greatest. Loss of these nutrients from the plant can seriously affect its ability to grow and flower. Worse still, the insects may inject pathogenic viruses into the plant, thereby spelling its doom.

To deal with such a conspiracy requires a multi-pronged response from the grower.

First you need to watch where the ants are running to and fro, so that you can discover where their nest is located. If it's in a pot, the nest is easily destroyed. Simply tip the plant and mix onto the soil outside your green house, remove the plant, spread the mix and spray both mix and plant with a mixture of Pest Oil® and pyrethrum. If the ant nest is beneath a concrete slab or in a brick wall, you'll need to use more guile and lay a bait of ant poison.

Mortein Ant Sand® is an effective one that has been introduced recently but other types are also available.

Having dealt with the ringleaders, next get the subordinates. Close examination of all plants is important to locate infestations of scale, aphids and mealy bugs.



Remember that they often hide in obscure places, such as down in leaf sheath bases, on buried roots and in other hidden spots.

Remove all infested plants individually, and spray them with the above-mentioned mix, or use a soft toothbrush to apply it, mixed with detergent. It's important to use some sort of surface-tension breaker (such as a soluble oil, detergent or methylated spirit) to penetrate the waxy coat of some insects.

Don't apply more of these chemicals than necessary, as they may damage the plant's softer tissues. Remember that it's important to deal with all the culprits, not just the sapsuckers doing the immediate damage.

Illustration courtesy of **Rex Johnson**

2021
HAPPY NEW YEAR

Nambour Orchid Society



Nambour Orchid society meets on the 4th Saturday each Nambour Uniting Church Hall, Coronation Ave., Nambour

Business meeting commences at 12.45pm prior to the cultural meeting.

Cultural meeting Follows the business meeting at 2pm.

All members and visitors are welcome to both Business and Cultural meetings.

Plants are to be tabled for judging by 1.30pm .

Charlie's Cultural corner from 1.15pm to 1.45pm each meeting day.

The Species Appreciation Group is held monthly from February to November at member's homes .

Contact the Secretary for details. at nambourorchids@gmail.com

All **STOCQ** members welcome. Bring your species plants, a chair, a cup and a plate to share for afternoon tea

Patron	Graham & Beryl Robertson		
President	Gina McMonagle	07 5439 6353	
Vice President	G Robertson	07 5442 1288	
Secretary	Alison Parkes	07 5441 7201	nambourorchids@gmail.com
Treasurer	Jean Harris	07 5445 3307	
Editor	Richard Hand	07 5442 2879	rhand39@gmail.com

All correspondence to the Society should be addressed to nambourorchids@gmail.com

Articles for inclusion in the Newsletter should be sent to the editor at editornambourorchids@gmail.com

Send all adds, articles and photos etc. no later than 2 weeks prior to the monthly meeting

FOR SALE : NOS. members may use space in the Newsletter to sell Orchid related items free of charge.

Members can sell Orchids or foliage plants at our meetings. Only plants that we would use in show displays are permitted. **Please remember to add your gold coin donation to the honesty box.**

**Direct deposits for Shirts, name Badges and Membership are encouraged to the Club Bank Account.
Commonwealth Bank BSB 064424 A/c No 00909232.**

Add your name as a reference so our Treasurer knows who the money is from.

Club shirts are available , cost to members, \$25 for shirt with logo + \$5.50 if you require a pocket

Name badges, cost is \$7.00 for new members after attending 3 meetings, or \$10.95 for a replacement

PO Box 140, Nambour QLD 4560 _nambourorchids@gmail.com www.nambourorchidsociety.com



Supporters of Cittamani Hospice Services

Cittamani Hospice Services are in Palmwoods and provide end of life palliative care for people in need in their own homes.

They also provide essential equipment free of charge for patients use in their own home.